

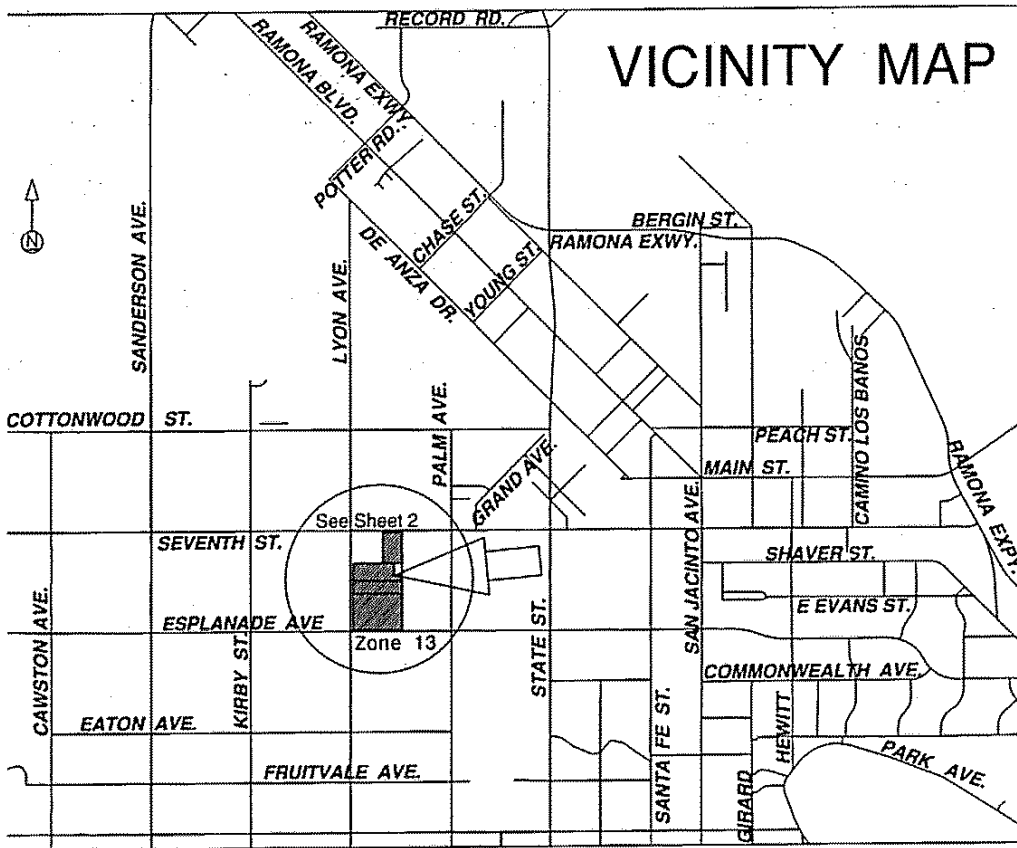
city

PROPOSED BOUNDARY MAP
ANNEXATION NO. 6 TO
ASSESSMENT DISTRICT NO. 2003-1
CITY OF SAN JACINTO
COUNTY OF RIVERSIDE
STATE OF CALIFORNIA

Reference is hereby made to that certain map entitled "Assessment Diagram, Assessment District No. 2003-1, City of San Jacinto, County of Riverside, State of California," filed the 23rd day of December, 2003, at the hour of 8 o'clock a.m. in Book 55 at page 64, and as instrument number 2003-998200 in the office of the County Recorder of the County of Riverside, State of California, which this Annexation Diagram affects.

- (1) Filed in the office of the City Clerk of the City of San Jacinto this 12th day of October, 2004.

Dorothy L. Chouinard
Dorothy L. Chouinard, San Jacinto City Clerk



- (2) I hereby certify that the within map showing the proposed boundaries of Annexation No. 6 to Assessment District No. 2003-1, City of San Jacinto, Riverside County, State of California, was approved by the City Council at a regular meeting thereof, held on this 21st day of October, 2004, by its Resolution No. 2631.

Dorothy L. Chouinard
Dorothy L. Chouinard, San Jacinto City Clerk



- (3) Filed this 9 day of Dec, 2004, at the hour of 8 o'clock A.m. in Book 59 of Maps of Assessment and Community Facilities Districts at page 91-92 and as Instrument No. 2004-0979133 in the office of the County Recorder of Riverside County, State of California.

Gary L. Orso
Assessor-County Clerk-Recorder of Riverside County

By [Signature]
Deputy

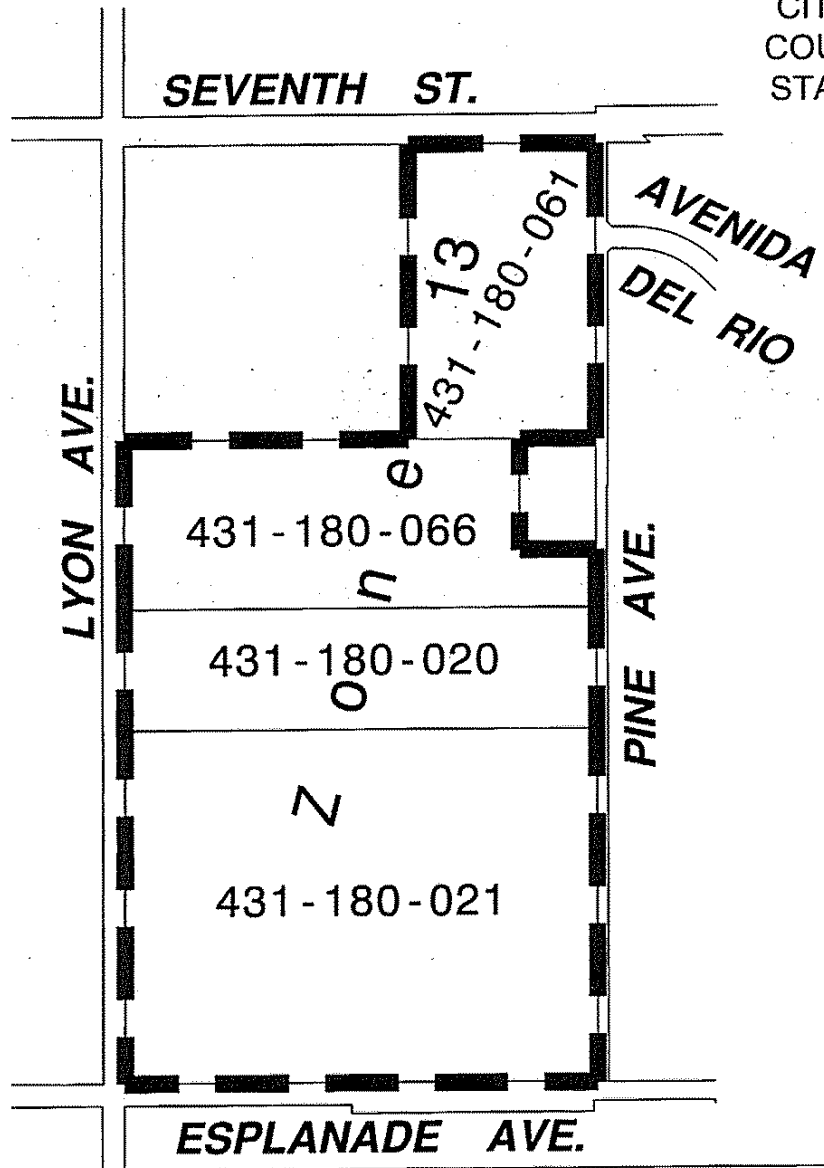
Fee \$500

Exempt recording requested, per CA Government Code §6103


PROPOSED BOUNDARY MAP
ANNEXATION NO. 6 TO
ASSESSMENT DISTRICT NO. 2003-1
CITY OF SAN JACINTO
COUNTY OF RIVERSIDE
STATE OF CALIFORNIA

city

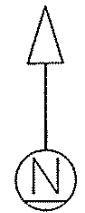
9/29



LEGEND

	Proposed Boundaries of Annexation No. 6 to Assessment District No. 2003-1 San Jacinto, Riverside County, CA
431-180-0nn	Assessor Parcel Number

Reference is hereby made to the Assessor maps of the County of Riverside for an exact description of the lines and dimensions of each lot and parcel.



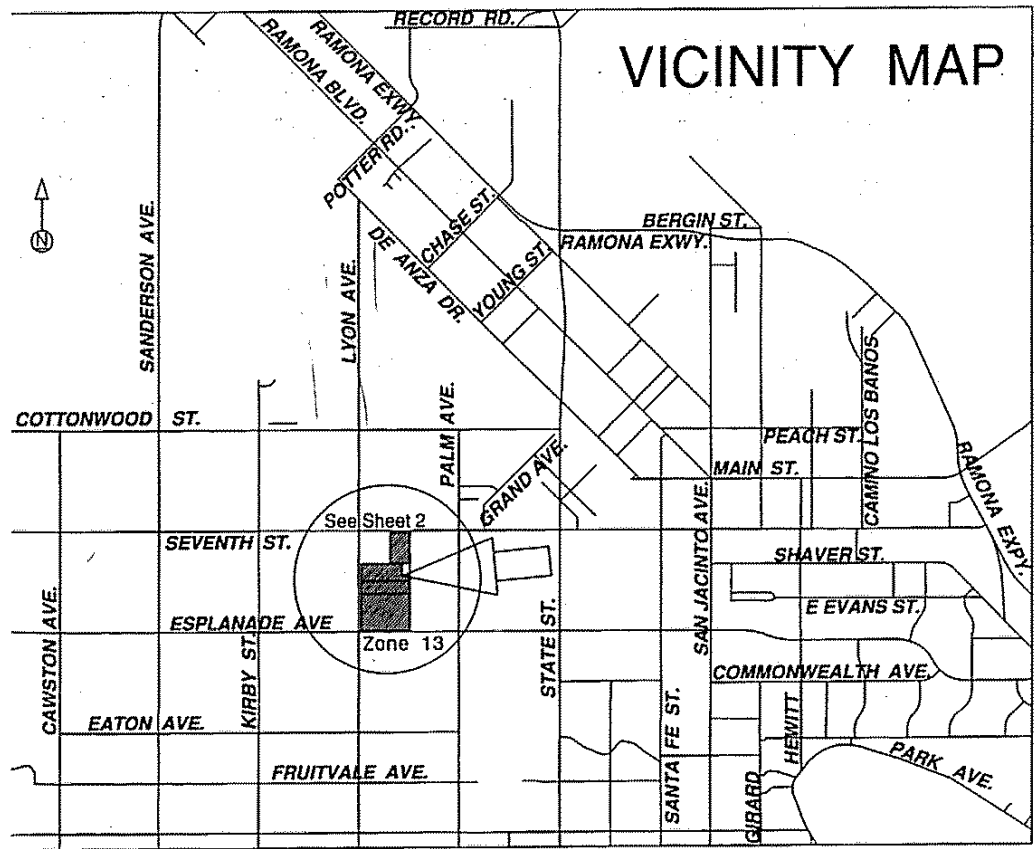
ASSESSMENT DIAGRAM
ANNEXATION NO. 6 TO
ASSESSMENT DISTRICT NO. 2003-1
CITY OF SAN JACINTO
COUNTY OF RIVERSIDE
STATE OF CALIFORNIA

city 59

Reference is hereby made to that certain map entitled "Assessment Diagram, Assessment District No. 2003-1, City of San Jacinto, County of Riverside, State of California," filed the 23rd day of December, 2003, at the hour of 8 o'clock a.m. in Book 55 at page 64, and as instrument number 2003-998200 in the office of the County Recorder of the County of Riverside, State of California, which this Annexation Diagram affects.

Filed in the office of the City Clerk of the City of San Jacinto this 12th day of October, 2004.

Dorothy L. Chouinard
Dorothy L. Chouinard, San Jacinto City Clerk



An assessment was levied by the City Council of the City of San Jacinto on the lots, pieces, and parcels of land shown on this assessment diagram. Said assessment was levied on the 4th day of November, 2004. Said assessment diagram and the assessment roll were recorded in the office of the City Clerk of San Jacinto on the 5th day of November 2004. Reference is made to the assessment roll recorded in the office of the San Jacinto City Clerk for the exact amount of each assessment levied against each parcel of land shown on this assessment diagram.

Dorothy L. Chouinard
Dorothy L. Chouinard, San Jacinto City Clerk



Filed this 9 day of Dec, 2004, at the hour of 8 o'clock Am, in Book 59 of Maps of Assessment and Community Facilities Districts at page 95-96 and as Instrument No. 2004-0979135 in the office of the County Recorder of Riverside County, State of California.

Gary L. Orso
Assessor-County Clerk-Recorder of Riverside County

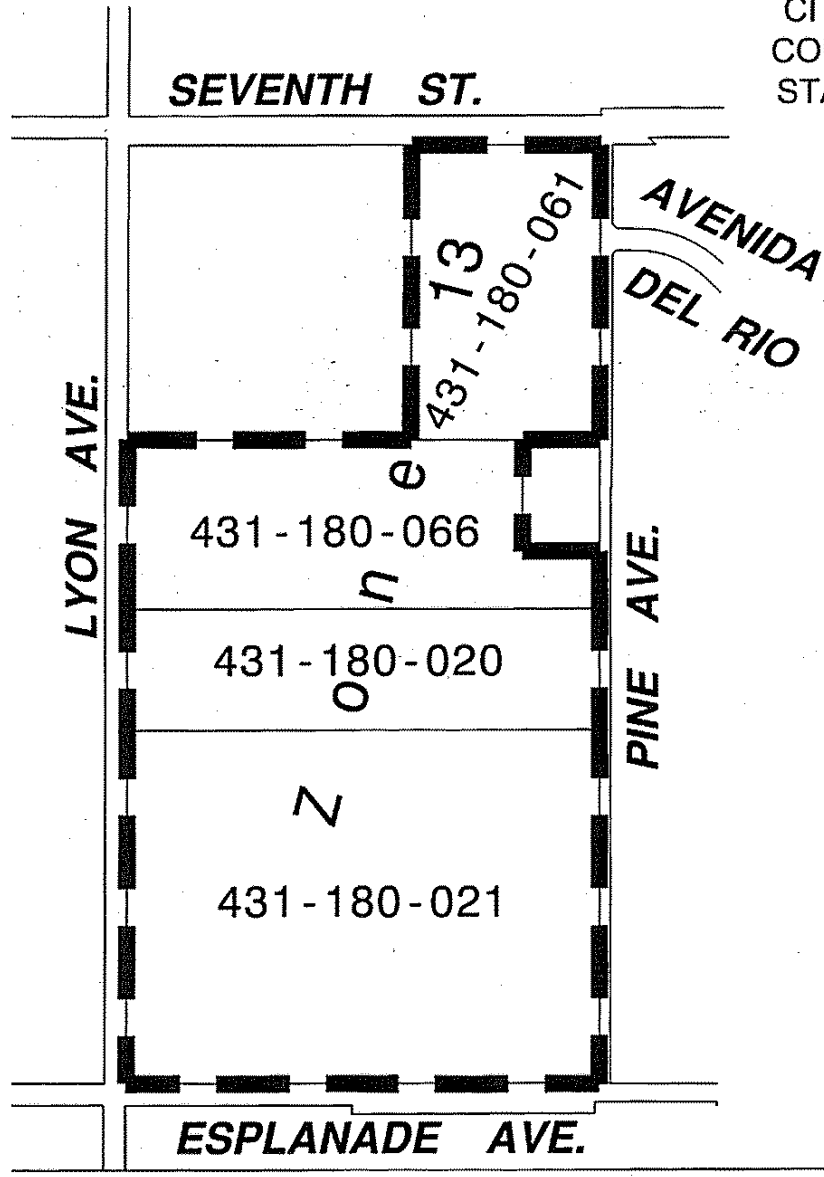
By [Signature]
Deputy

Fee \$900

Exempt recording requested, per CA Government Code §6103

ASSESSMENT DIAGRAM
ANNEXATION NO. 6 TO
ASSESSMENT DISTRICT NO. 2003-1
CITY OF SAN JACINTO
COUNTY OF RIVERSIDE
STATE OF CALIFORNIA

city 5/4



LEGEND

	Zone 13 Boundaries of Annexation No. 6 to Assessment District No. 2003-1 San Jacinto, Riverside County, CA
431-180-0nn	Assessor Parcel Number

Reference is hereby made to the Assessor maps of the County of Riverside for an exact description of the lines and dimensions of each lot and parcel.

