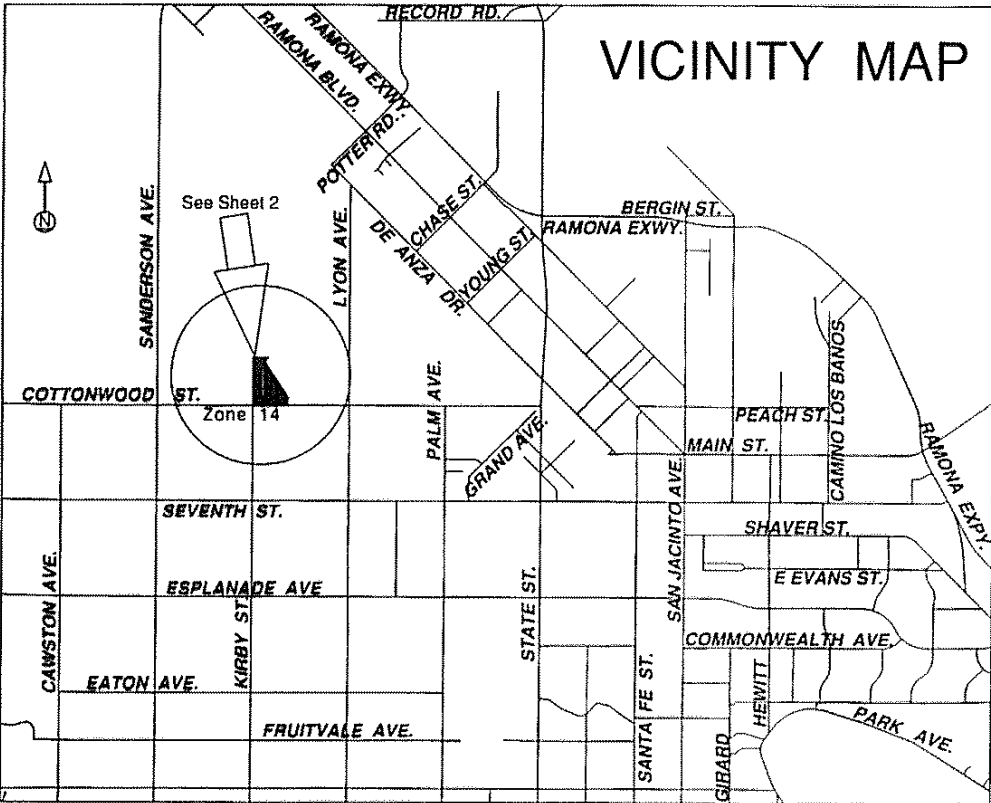


PROPOSED BOUNDARY MAP  
ANNEXATION NO. 7 TO  
ASSESSMENT DISTRICT NO. 2003-1  
CITY OF SAN JACINTO  
COUNTY OF RIVERSIDE  
STATE OF CALIFORNIA

Reference is hereby made to that certain map entitled "Assessment Diagram, Assessment District No. 2003-1, City of San Jacinto, County of Riverside, State of California," filed the 23rd day of December, 2003, at the hour of 8 o'clock a.m. in Book 55 at page 64, and as instrument number 2003-998200 in the office of the County Recorder of the County of Riverside, State of California, which this Annexation Diagram affects.

(1) Filed in the office of the City Clerk of the City of San Jacinto this 11<sup>th</sup> day of November, 2004.

Dorothy L. Chouinard  
Dorothy L. Chouinard, San Jacinto City Clerk



Prepared by David Taussig & Associates, Inc.

(2) I hereby certify that the within map showing the proposed boundaries of Annexation No. 7 to Assessment District No. 2003-1, City of San Jacinto, Riverside County, State of California, was approved by the City Council at a regular meeting thereof, held on this 18<sup>th</sup> day of November, 2004, by its Resolution No. 2641.

Dorothy L. Chouinard  
Dorothy L. Chouinard, San Jacinto City Clerk



(3) Filed this 30 day of November, 2004, at the hour of 8 o'clock am, in Book 59 of Maps of Assessment and Community Facilities Districts at page 80-61 and as Instrument No. 2004-0948787 in the office of the County Recorder of Riverside County, State of California.

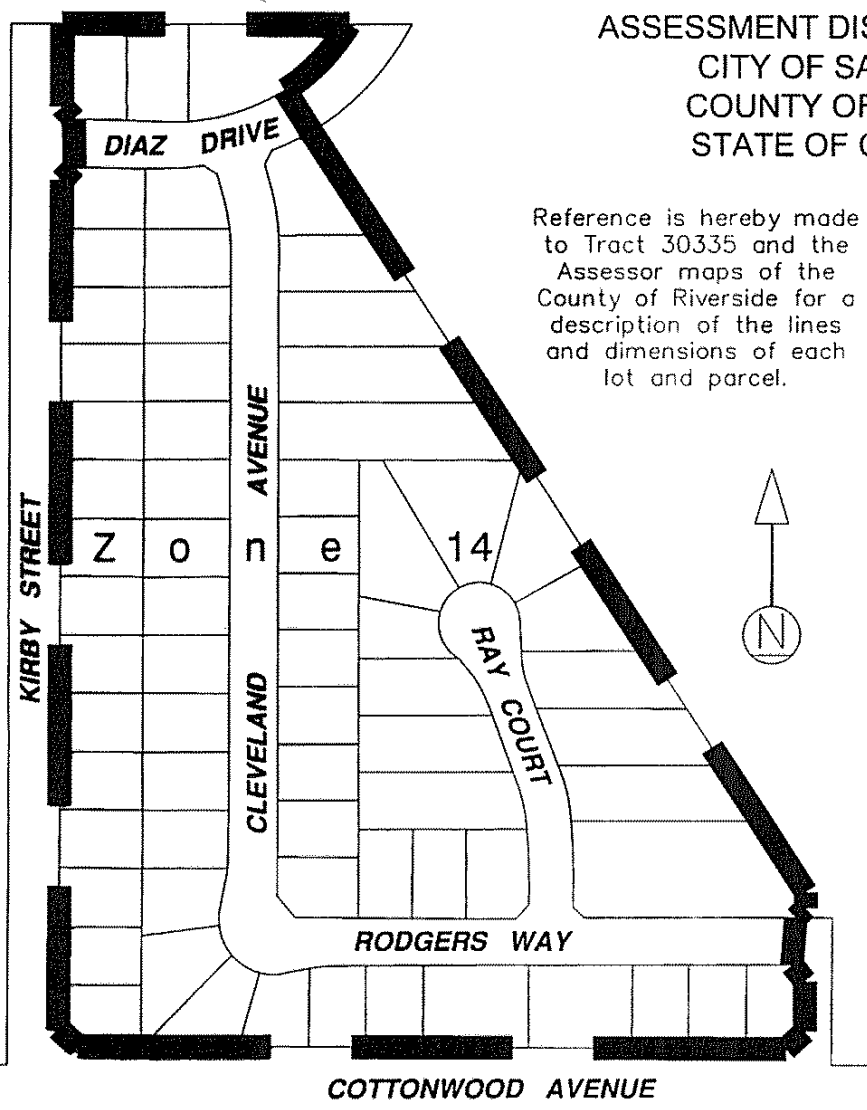
Gary L. Orso  
Assessor-County Clerk-Recorder of Riverside County

By [Signature]  
Deputy

Fee \$ 9.00

Exempt recording requested, per CA Government Code §6103

PROPOSED BOUNDARY MAP  
ANNEXATION NO. 7 TO  
ASSESSMENT DISTRICT NO. 2003-1  
CITY OF SAN JACINTO  
COUNTY OF RIVERSIDE  
STATE OF CALIFORNIA




Reference is hereby made to Tract 30335 and the Assessor maps of the County of Riverside for a description of the lines and dimensions of each lot and parcel.

Assessor Parcel Numbers within the Boundaries of  
City of San Jacinto AD No. 2003-1 Annexation No. 7:

431-430-001	431-430-024	431-432-002
431-430-002	431-430-025	431-432-003
431-430-003	431-430-026	431-440-001
431-430-004	431-430-027	431-440-002
431-430-005	431-430-028	431-440-003
431-430-006	431-430-029	431-440-004
431-430-007	431-430-030	431-440-005
431-430-008	431-430-031	431-440-006
431-430-009	431-430-032	431-441-001
431-430-010	431-431-001	431-441-002
431-430-011	431-431-002	431-441-003
431-430-012	431-431-003	431-441-004
431-430-013	431-431-004	431-441-005
431-430-014	431-431-005	431-441-006
431-430-015	431-431-006	431-441-007
431-430-016	431-431-007	431-441-008
431-430-017	431-431-008	431-441-009
431-430-018	431-431-009	431-441-010
431-430-019	431-431-010	431-441-011
431-430-020	431-431-011	431-441-012
431-430-021	431-431-012	431-441-013
431-430-022	431-431-013	431-441-014
431-430-023	431-432-001	431-441-015

LEGEND

 Proposed Boundaries of Annexation No. 7 to Assessment District No. 2003-1 San Jacinto, Riverside County, CA

city 60/10

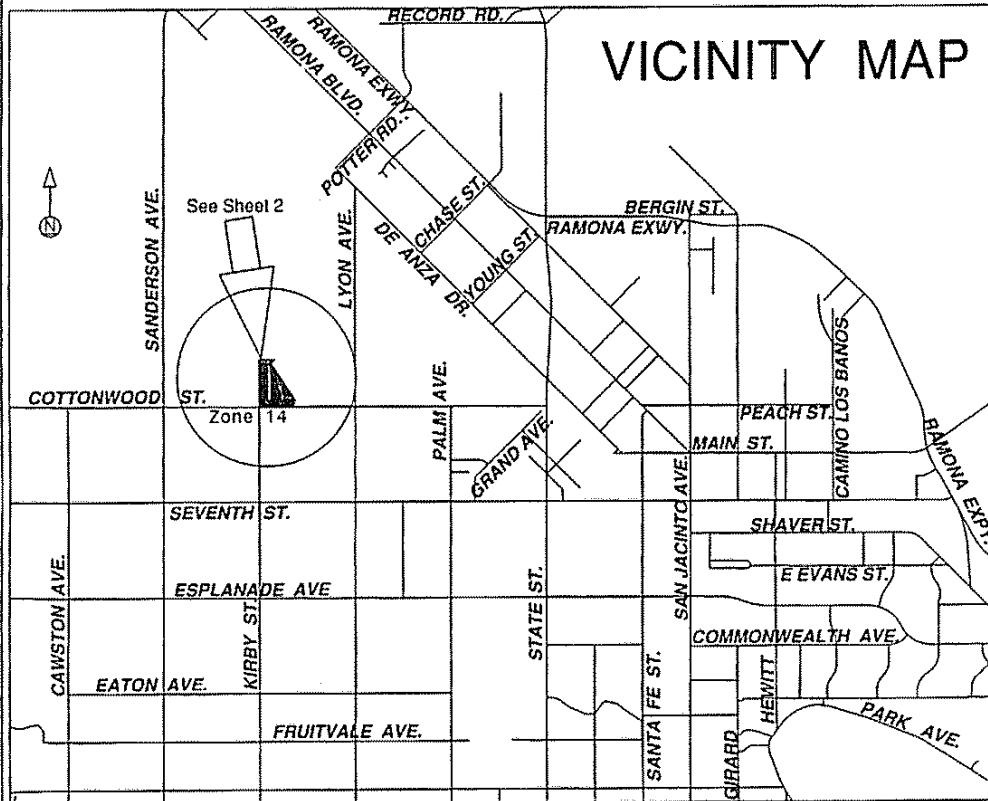
SHEET 1 OF 2

ASSESSMENT DIAGRAM  
ANNEXATION NO. 7 TO  
ASSESSMENT DISTRICT NO. 2003-1  
CITY OF SAN JACINTO  
COUNTY OF RIVERSIDE  
STATE OF CALIFORNIA

Reference is hereby made to that certain map entitled "Assessment Diagram, Assessment District No. 2003-1, City of San Jacinto, County of Riverside, State of California," filed the 23rd day of December, 2003, at the hour of 8 o'clock a.m. in Book 55 at page 64, and as instrument number 2003-998200 in the office of the County Recorder of the County of Riverside, State of California, which this Annexation Diagram affects.

Filed in the office of the City Clerk of the City of San Jacinto this 9<sup>th</sup> day of November, 2004.

Dorothy L. Chouinard  
Dorothy L. Chouinard, San Jacinto City Clerk



An assessment was levied by the City Council of the City of San Jacinto on the lots, pieces, and parcels of land shown on this assessment diagram. Said assessment was levied on the 20<sup>th</sup> day of December, 2004. Said assessment diagram and the assessment roll were recorded in the office of the City Clerk of San Jacinto on the 3<sup>rd</sup> day of December, 2004. Reference is made to the assessment roll recorded in the office of the San Jacinto City Clerk for the exact amount of each assessment levied against each parcel of land shown on this assessment diagram.

Dorothy L. Chouinard  
Dorothy L. Chouinard, San Jacinto City Clerk



Filed this 20<sup>th</sup> day of December, 2004, at the hour of 8 o'clock A.m. in Book 60 of Maps of Assessment and Community Facilities Districts at page 10-11 and as Instrument No. 2004-100676 in the office of the County Recorder of Riverside County, State of California.

Gary L. Orso  
Assessor-County Clerk-Recorder of Riverside County

By A. Khia  
Deputy

Fee \$9.-

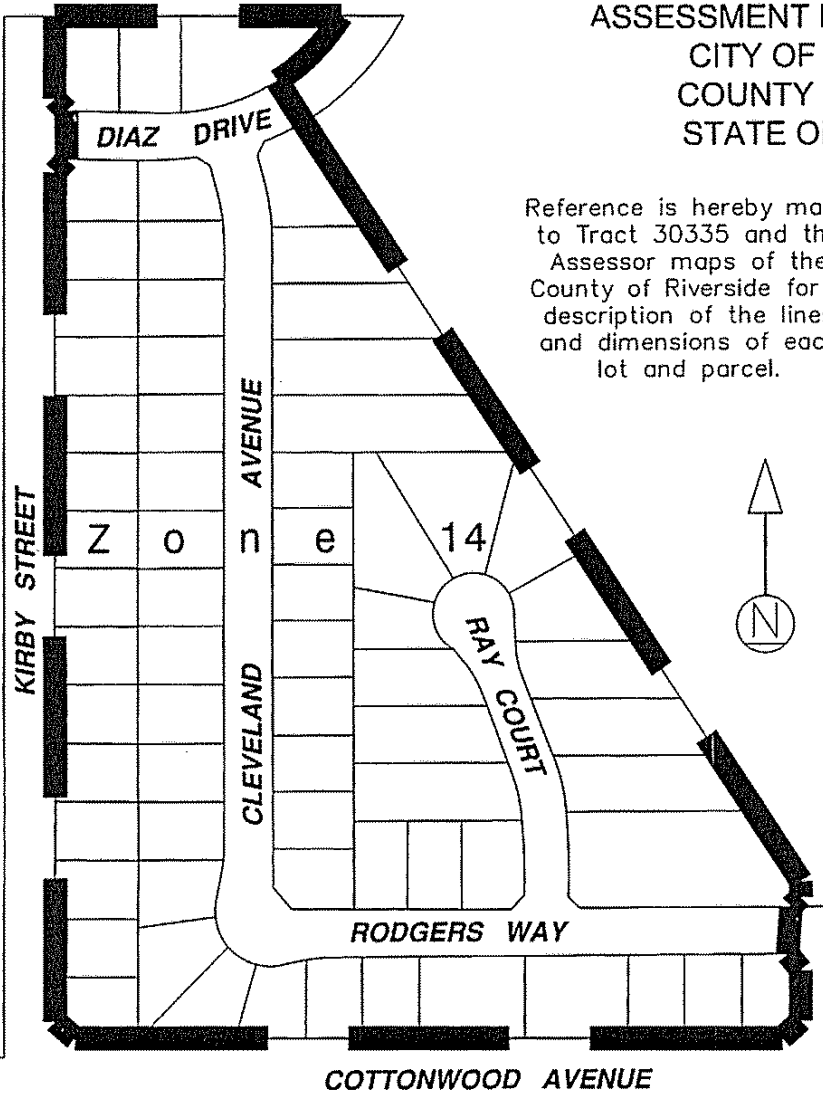
Exempt recording requested, per CA Government Code §6103

ASSESSMENT DIAGRAM  
ANNEXATION NO. 7 TO  
ASSESSMENT DISTRICT NO. 2003-1  
CITY OF SAN JACINTO  
COUNTY OF RIVERSIDE  
STATE OF CALIFORNIA


Reference is hereby made to Tract 30335 and the Assessor maps of the County of Riverside for a description of the lines and dimensions of each lot and parcel.

Assessor Parcel Numbers within the Boundaries of  
City of San Jacinto AD No. 2003-1 Annexation No. 7:

431-430-001	431-430-024	431-432-002
431-430-002	431-430-025	431-432-003
431-430-003	431-430-026	431-440-001
431-430-004	431-430-027	431-440-002
431-430-005	431-430-028	431-440-003
431-430-006	431-430-029	431-440-004
431-430-007	431-430-030	431-440-005
431-430-008	431-430-031	431-440-006
431-430-009	431-430-032	431-441-001
431-430-010	431-431-001	431-441-002
431-430-011	431-431-002	431-441-003
431-430-012	431-431-003	431-441-004
431-430-013	431-431-004	431-441-005
431-430-014	431-431-005	431-441-006
431-430-015	431-431-006	431-441-007
431-430-016	431-431-007	431-441-008
431-430-017	431-431-008	431-441-009
431-430-018	431-431-009	431-441-010
431-430-019	431-431-010	431-441-011
431-430-020	431-431-011	431-441-012
431-430-021	431-431-012	431-441-013
431-430-022	431-431-013	431-441-014
431-430-023	431-432-001	431-441-015



LEGEND

 Zone 14 Boundaries of Annexation No. 7 to Assessment District No. 2003-1 San Jacinto, Riverside County, CA