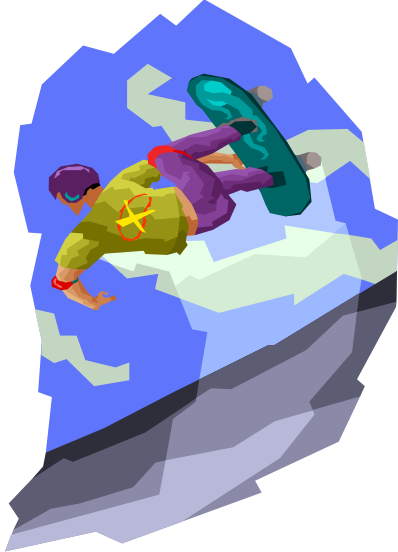




City of San Jacinto Skate Park 2nd Community Outreach Meeting



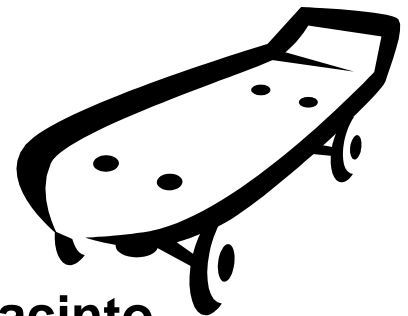
The City of San Jacinto invites you to come join your friends and neighbors at the second community outreach meeting for the future Sallee Skate Park.

Please come and share your ideas on the designs proposed for the Sallee Park Skate Park.



When: 6:30 p.m. Wednesday
January 6, 2010

Where: Sallee Park
PAL Center
180 Idyllwild Dr, San Jacinto



For More Information Contact City of San Jacinto (951) 654-7337 or <http://www.ci.san-jacinto.ca.us/>